

A collection of seven stars in various colors (blue, white, magenta, red, yellow, green) arranged around the central text.

St. John's University MestRACT Cohort May 2007



By Susan MacDonald

St. John's University



Oakdale Campus



ST. JOHN'S UNIVERSITY

*Founded in 1870
By the Vincentian Community*

Visit our Website today... www.stjohns.edu

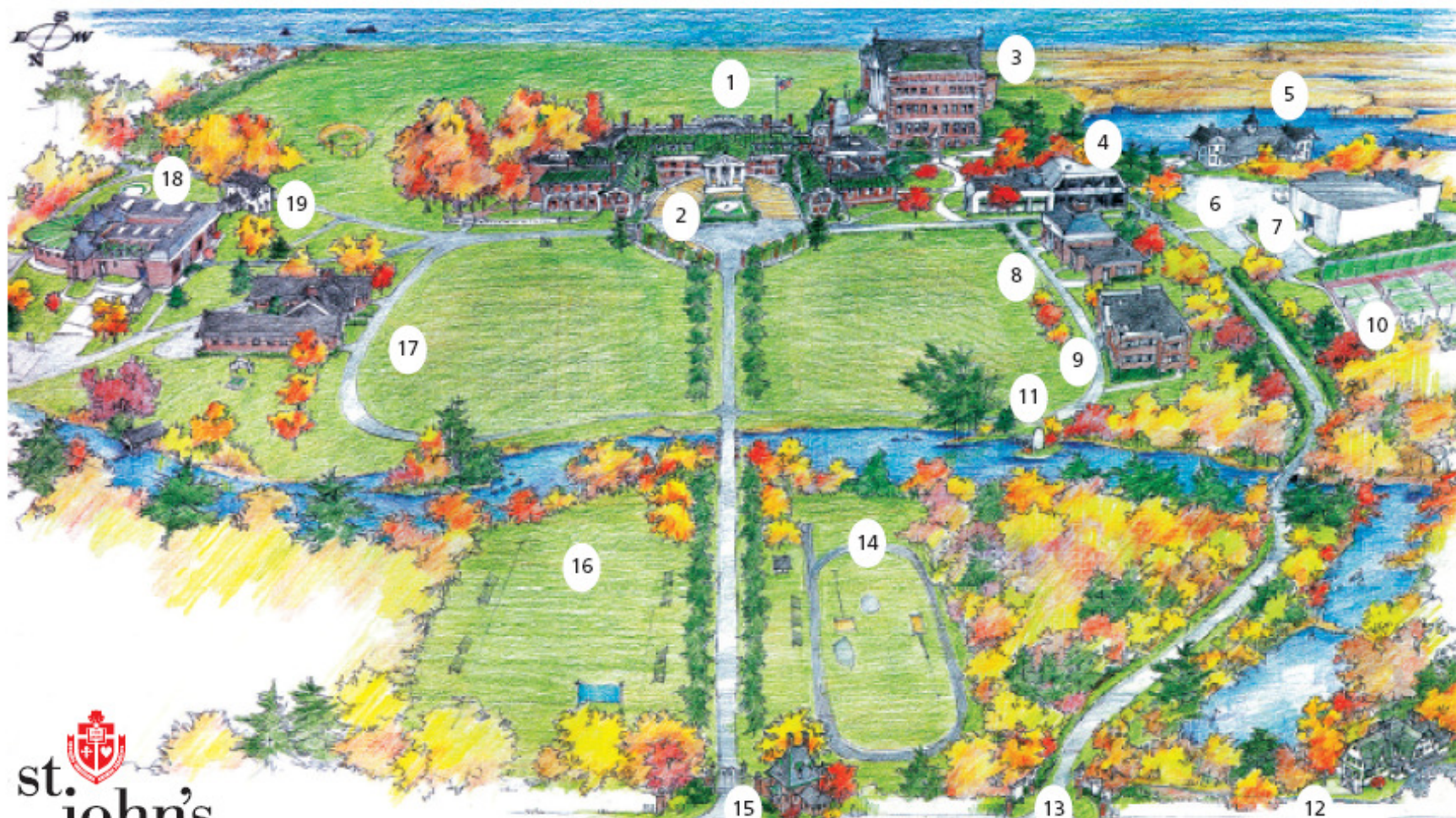
500

Gate

2

Center for
Graduate Studies

Oakdale Campus



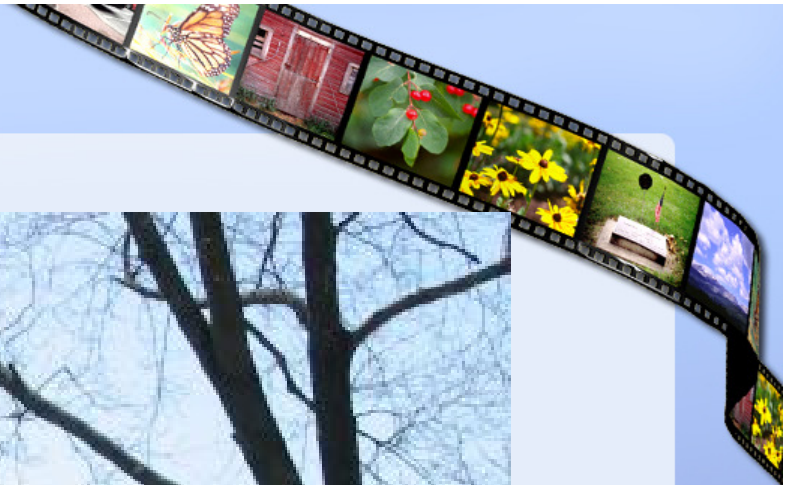
1. Parade Field
2. Mansion
3. St. Joseph Hall
4. Br. Miguel Center
5. Boat House

6. Parking Area
7. Centennial Hall
8. St. Benilde Library
9. Graduate Academic Center
10. Tennis Courts

11. Grotto
12. Lake House
13. West Entrance
14. Track
15. Gate House

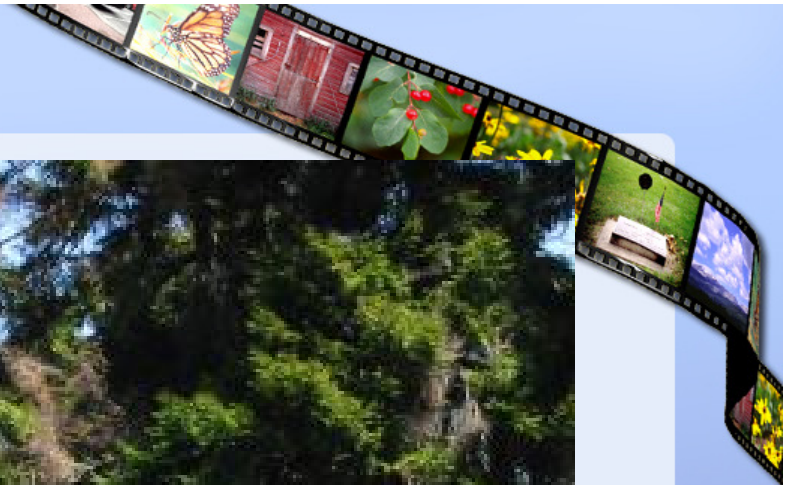
16. Athletic Field
17. Molloy Hall
18. Dudack/Pool Complex
19. Blue Shed


























Some rules are made
to be broken...



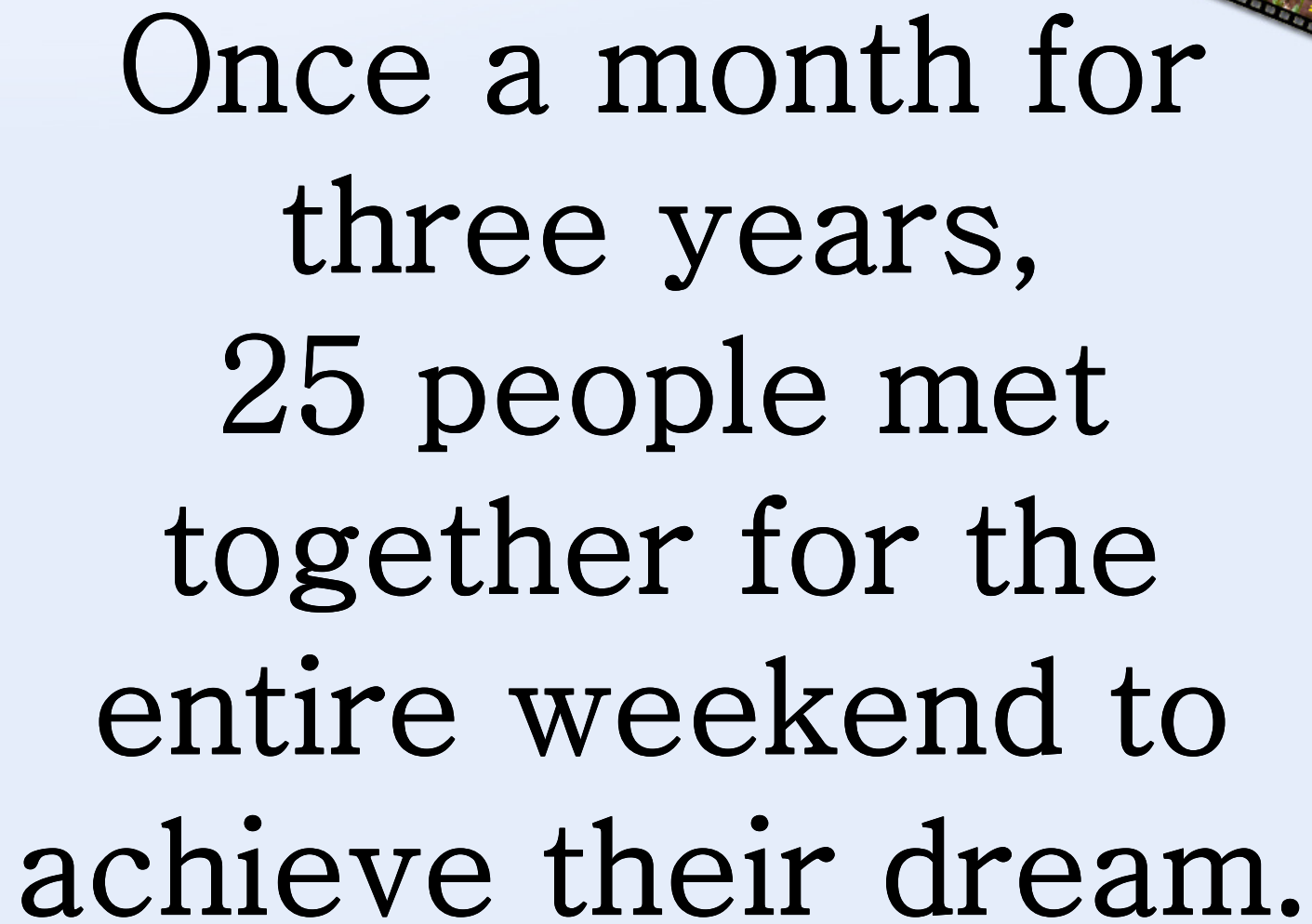
Except For Room #7
There is Absolutely No Food
Or Drinks Allowed In
Classrooms Or Center Areas.





Say Goodbye to daylight



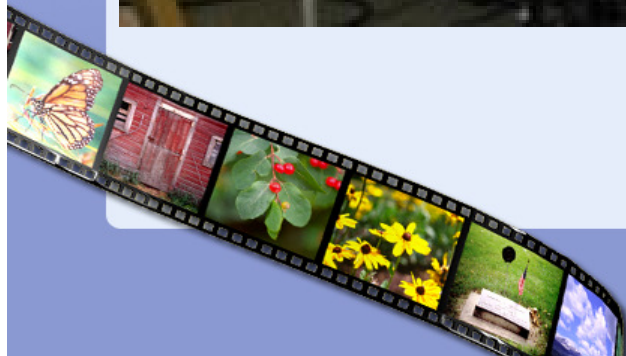
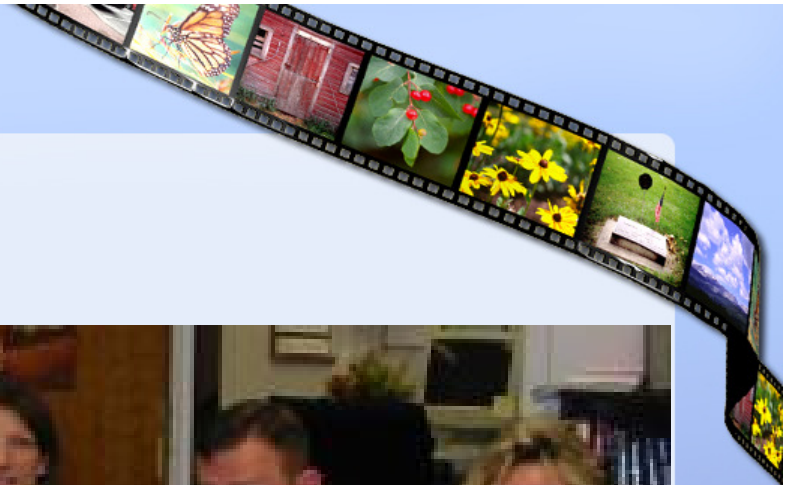
A decorative border resembling a film strip runs diagonally across the top-right and bottom-left corners of the slide. The film strip contains various nature scenes, including a monarch butterfly, a red barn, green foliage with red berries, yellow flowers, and a white picket fence. The background of the slide is a solid light blue color. In the top-left and bottom-right corners, there are three white rectangular shapes, each with a small black dot in the center, resembling window controls or film sprocket holes.

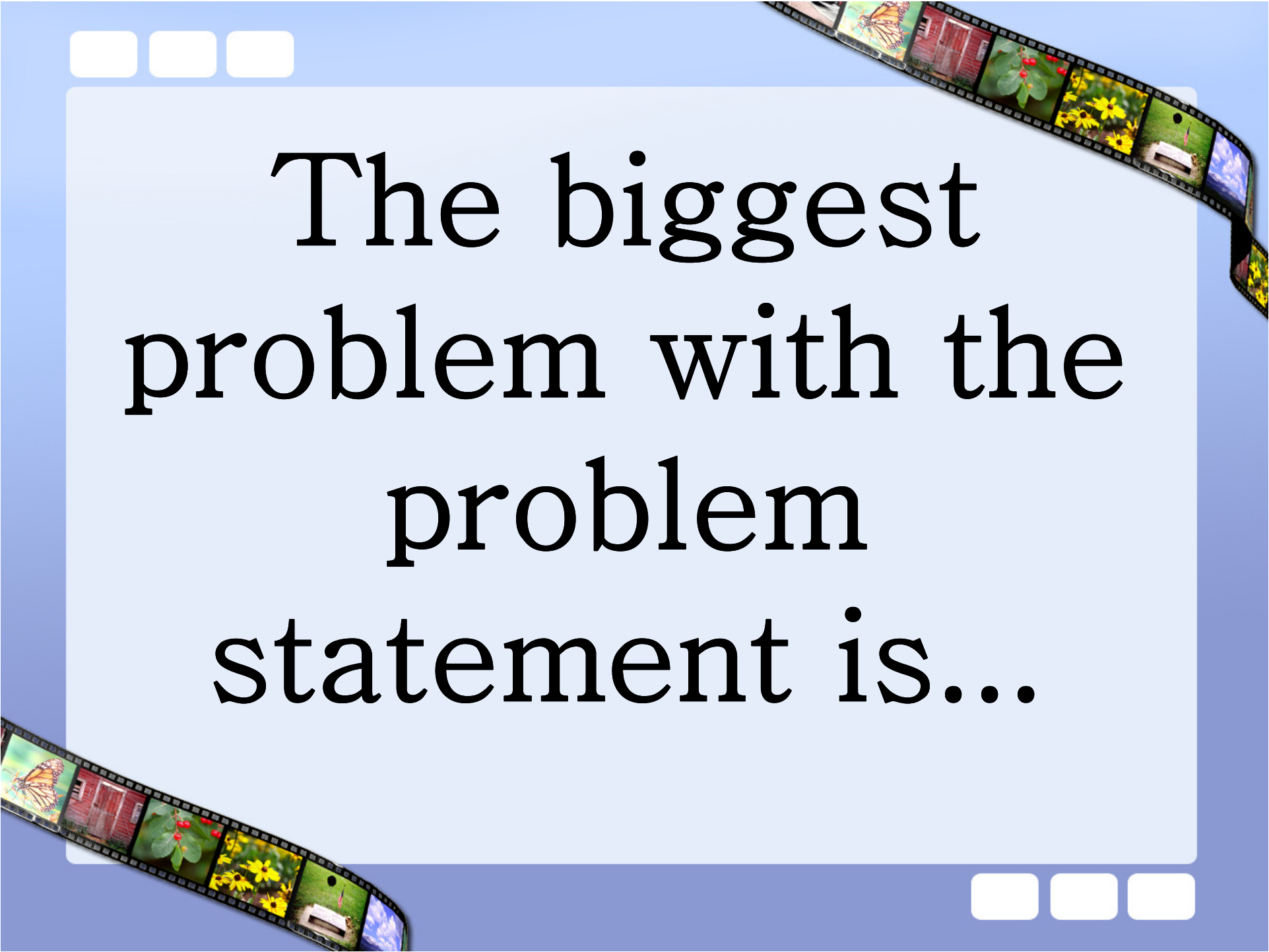
Once a month for
three years,
25 people met
together for the
entire weekend to
achieve their dream.











The biggest
problem with the
problem
statement is...

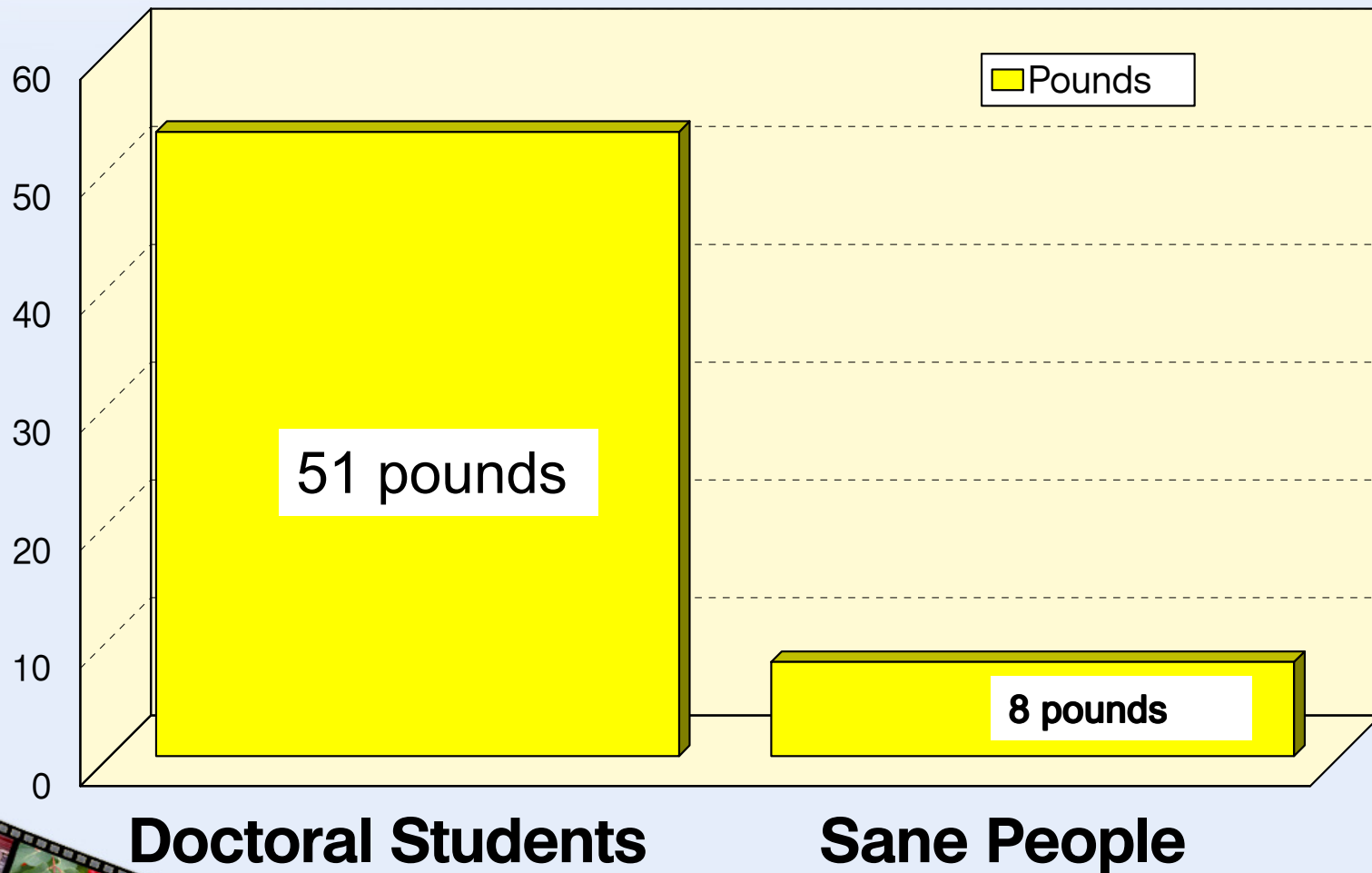


The Problem Statement

A decorative border resembling a film strip runs diagonally across the top-right and bottom-left corners of the slide. The film strip contains various nature scenes, including a monarch butterfly, a red barn, green leaves with red berries, yellow flowers, and a white bench on a grassy field. The background of the slide is a light blue gradient, framed by a darker blue border. In the top-left and bottom-right corners of the frame, there are three white rectangular buttons each.

Important Data for St. John's University

Weight gain after 3 years of Doctoral Work





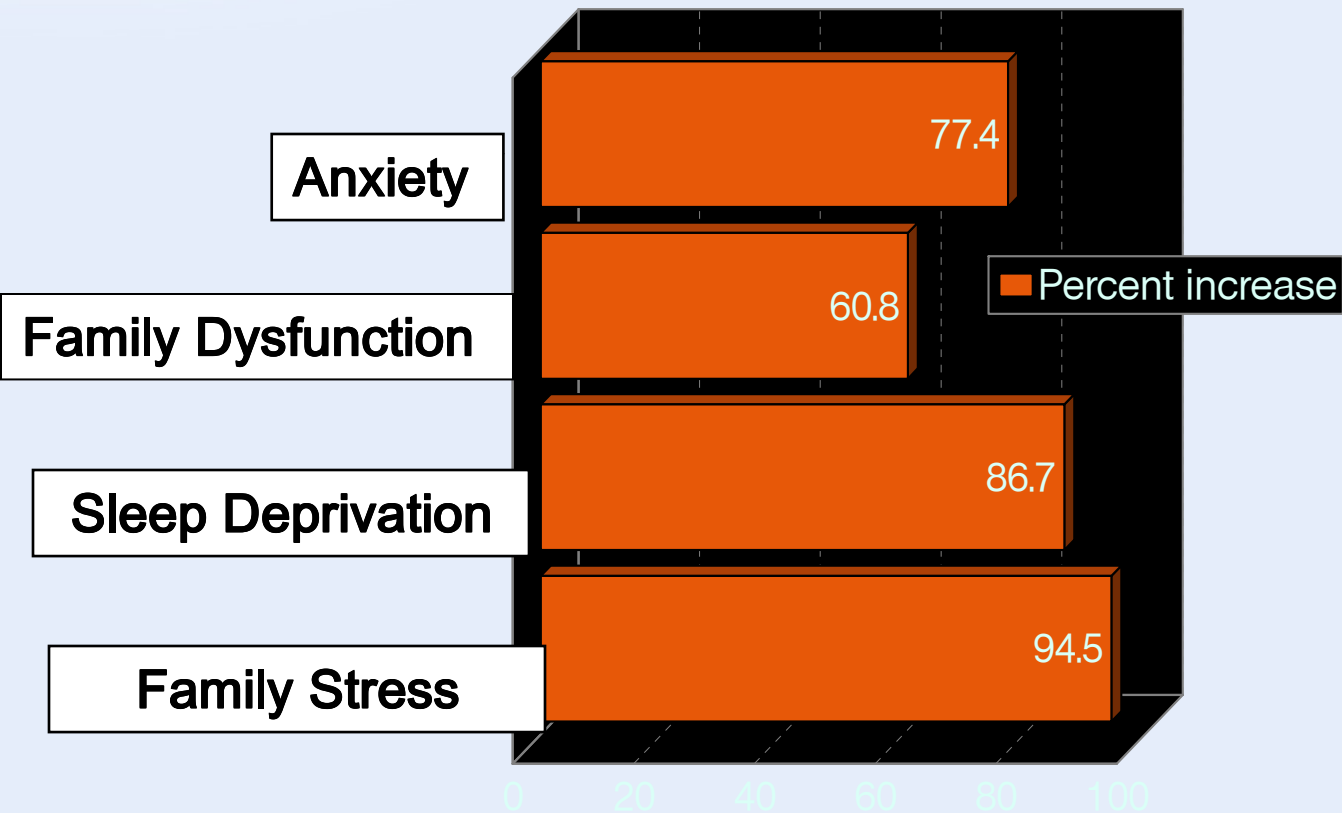
Methodology?

Qualitative

Or

Quantitative

Doctoral Stressors



Use Quan-li-tative

A decorative border resembling a film strip runs diagonally across the top-right and bottom-left corners of the slide. The film strip contains various nature scenes, including a monarch butterfly, a red barn, green foliage with red berries, yellow flowers, and a small white house on a hill. The background of the slide is a light blue gradient, framed by a darker blue border. In the top-left and bottom-right corners of the frame, there are three small white squares each, mimicking window controls.

Who's Who in Mestract Doctoral Cohort 6



Billy



Dan





Suzanne

Go Thearl



The Doctoral Pose





Peggy



MBF Brigid



Sal & Kelly



Thearl

Fake
smile



Regina trying to get
answers from Kelly

Nice Try Regina ☺



Elaine



Kelly

(Nice Ring!)



Kelly's Car





Regina & Susan

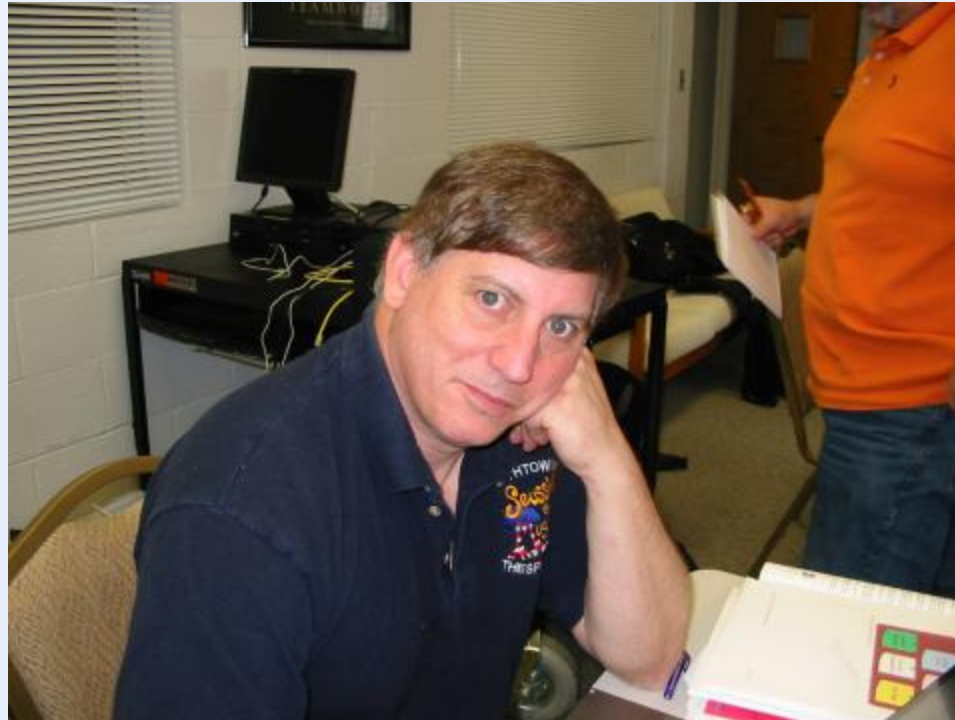


Stephanie



Kathy





Tom



Tara



Jack



Jack's Car





Sal



Jen



Camille

Just some light reading for tomorrow's class





Marge



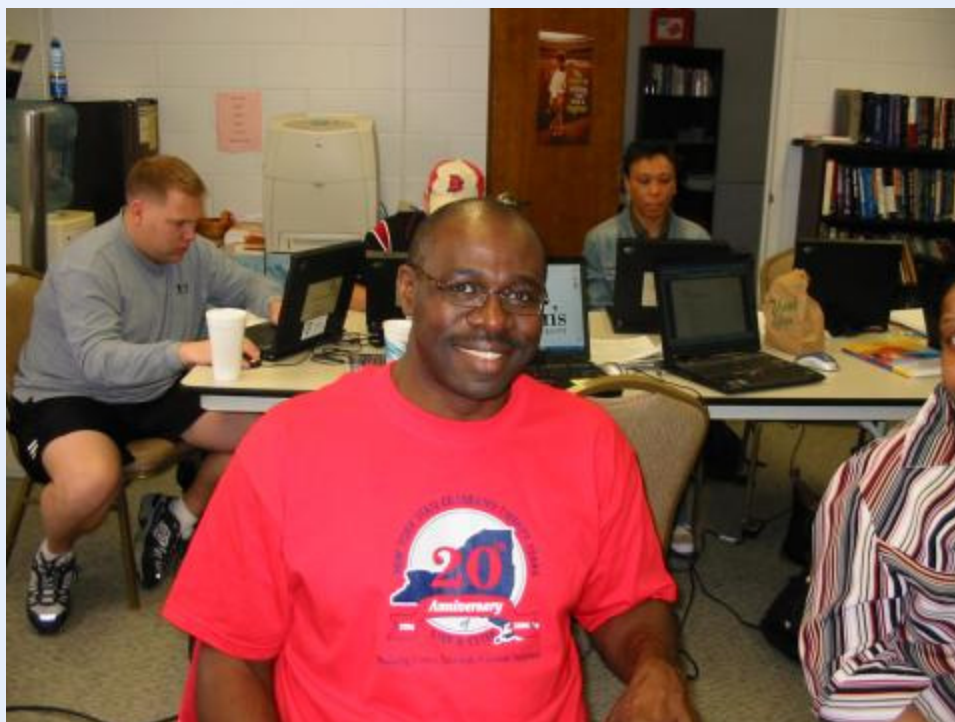
Whittney



George




Lynn



Tyrone



Valedictorian



www.words4ever.com

*CHOOSE YOUR FRIENDS BY THEIR CHARACTER AND
YOUR SOCKS BY THEIR COLOR. CHOOSING YOUR SOCKS
BY THEIR CHARACTER MAKES NO SENSE, AND CHOOSING
YOUR FRIENDS BY THEIR COLOR IS UNTHINKABLE.*

AMON



Never surrender...

Good luck writing your
dissertation.

It's truly been a wonderful
experience working with
all of you.

Susan MacDonald

